



LIBRARIES TRANSFORMING COMMUNITIES: MODELS FOR CHANGE

Overview

Speakers: Mary Davis Fournier, Deputy Director, ALA Public Programs Office
Cindy Fesemyer, Director, Columbus (Wis.) Public Library
Courtney Breese, Managing Director, NCDD

BECAUSE OUR DIVIDED NATION NEEDS
CONVERSATION MORE THAN EVER.



TODAY'S PRESENTERS



Mary Davis Fournier

Deputy Director

American Library Association
Public Programs Office



Cindy Fesemyer

Director

Columbus (Wis.) Public Library



Courtney Breese

Managing Director

National Coalition for Dialogue &
Deliberation



LIBRARIES TRANSFORMING COMMUNITIES: MODELS FOR CHANGE

BECAUSE OUR DIVIDED NATION NEEDS
CONVERSATION MORE THAN EVER.



AGENDA

- ▶ Introduction
- ▶ ALA Overview – Mary Davis Fournier
- ▶ Come Out and Play – Cindy Fesemyer
- ▶ NCDD and Models Overview – Courtney Breese
- ▶ FAQs and Resources
- ▶ Q&A

IF LIBRARIES

have the community engagement tools
they need

to bring disparate voices together
and **LEAD** change,

THEN

we will have
stronger communities

TURNING OUTWARD



An orientation toward community – literally about the direction we are facing!

ala.org/LTC

ala.org/LTC-models

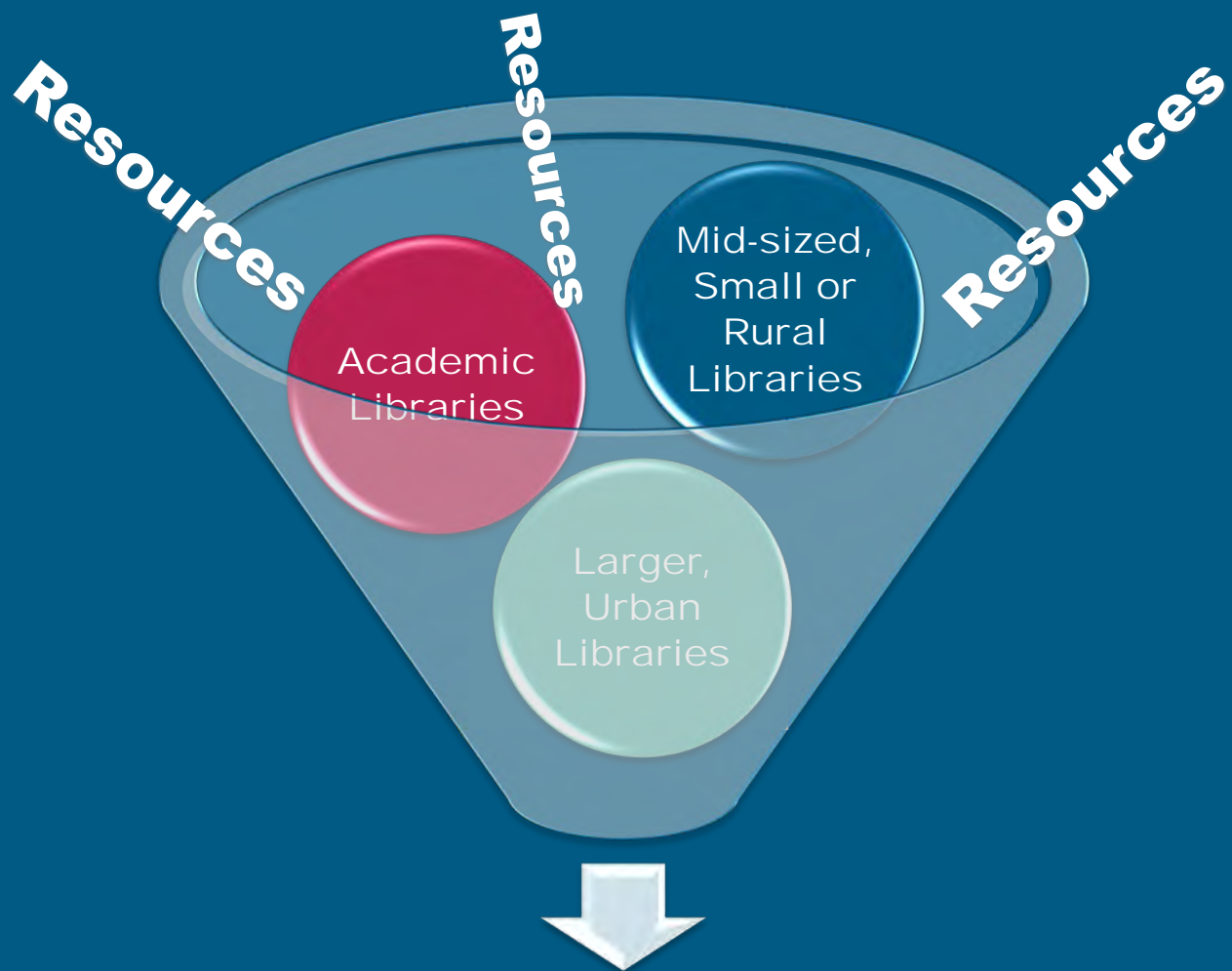
[#librariestransform](https://twitter.com/librariestransform)



LIBRARIES AND COMMUNITY ENGAGEMENT

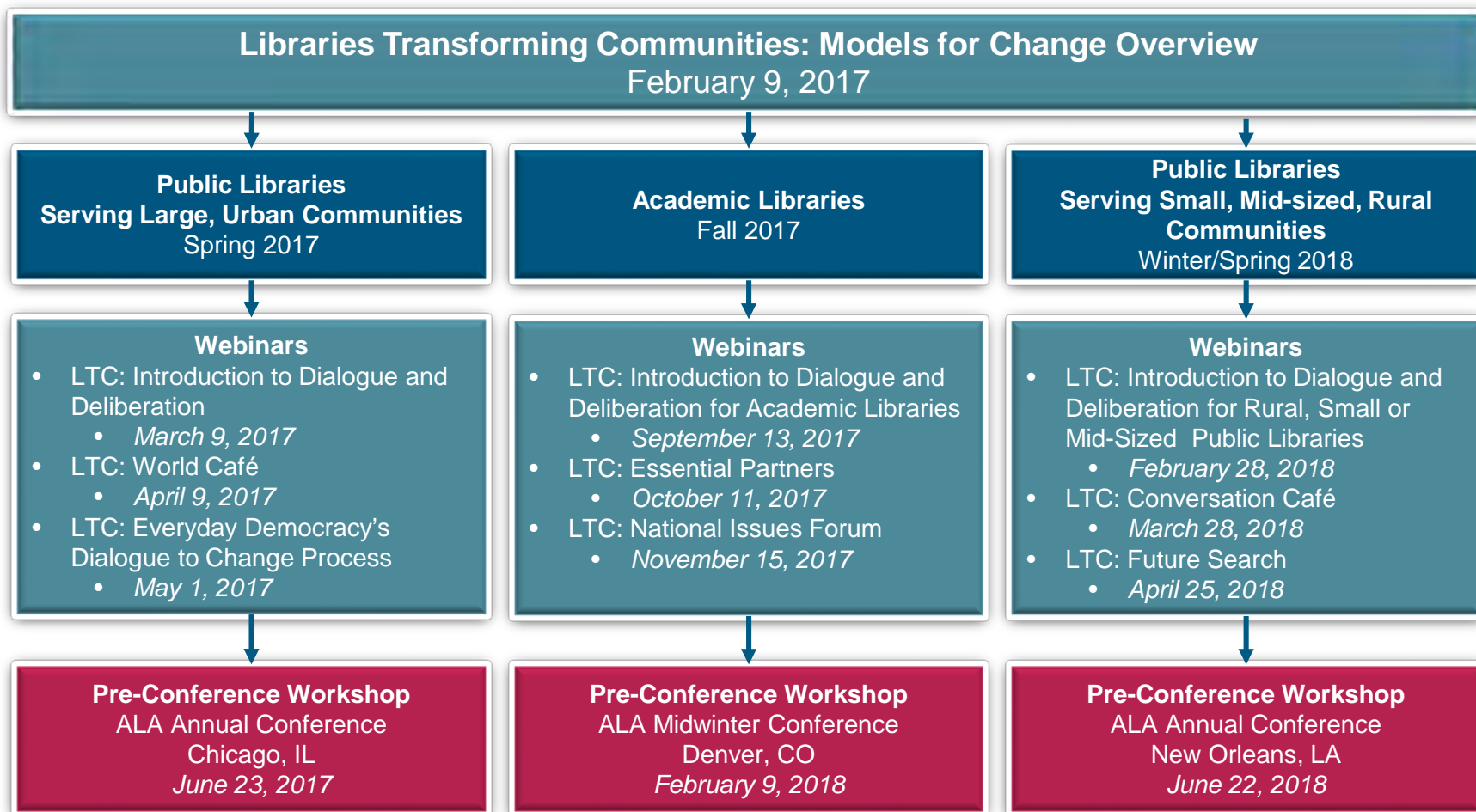


- ▶ **Training targeting public and academic libraries**
- ▶ **Community of practice**
- ▶ **Sharing resources, stories**
- ▶ **Travel help for small and rural libraries**



Community of Practice

LEARNING SCHEDULE



WHERE DO I FIT IN?

Public Libraries
Serving Large, Urban Communities
Spring 2017

Academic Libraries
Fall 2017

Public Libraries
Serving Small, Mid-sized, Rural
Communities
Winter/Spring 2018

- **Very Small**
 - Less than 10,000
- **Small**
 - 10,000 – 24,999
- **Medium**
 - 25,000 – 99,999
- **Large**
 - 100,000 – 499,999
- **Very Large**
 - More than 500,000



COLUMBUS PUBLIC LIBRARY



Cindy Fesemyer
Director
Columbus Public Library
Columbus, Wisconsin



**COME
OUT
AND
PLAY!**

WHY THE LIBRARY?

- Why not?
- And if not us, then who?



WHY IS IT WORTH IT?

The transition is hard, but it's about...

- Meaningful community change
- Collective impact
- Relevance



Libraries that support their communities have communities that support their libraries

ENGAGEMENT



DEMOCRACY

COMMUNITY CONVERSATIONS

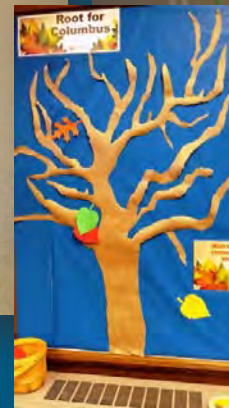
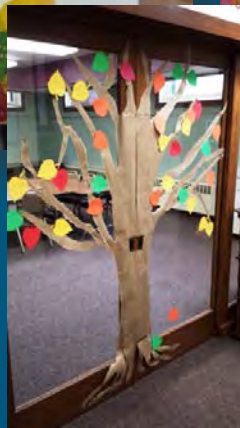
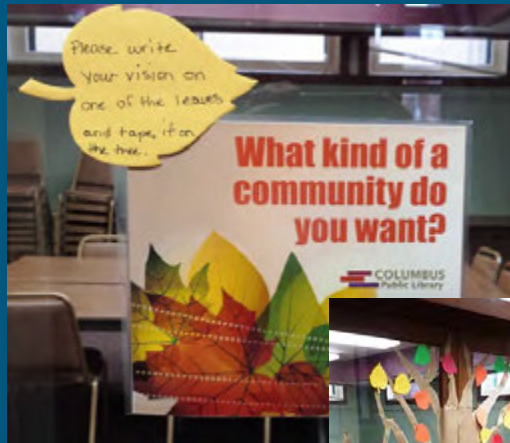


ala.org/LTC-models

[#librariestransform](https://twitter.com/librariestransform)



ROOT FOR COLUMBUS CAMPAIGN



WHAT WE LEARNED

- People want **a vibrant and welcoming community for all.**
- But they're concerned that **people don't work well together.**
- As people talk more about those concerns, they talk about **the lack of boundary-crossing social interaction and the lack of stuff to do for kids and families.**
- They say that we need to focus on **bringing people together to create civic pride.**
- And if **citizens themselves** played a part in those actions, folks would be more likely to trust the effort and step forward.

ROOT FOR COLUMBUS ACTION POTLUCK



ala.org/LTC-models

[#librariestransform](https://twitter.com/librariestransform)



THE ROAD AHEAD



ala.org/LTC-models

[#librariestransform](https://twitter.com/librariestransform)



NATIONAL COALITION FOR DIALOGUE & DELIBERATION



ala.org/LTC-models

#librariestransform





What is an issue you see your community grappling with, or a topic that is ripe for engagement?



NATIONAL COALITION FOR DIALOGUE & DELIBERATION



ala.org/LTC-models

[#librariestransform](https://twitter.com/librariestransform)



NCDD'S MEMBERSHIP



ala.org/LTC-models

[#librariestransform](https://twitter.com/librariestransform)

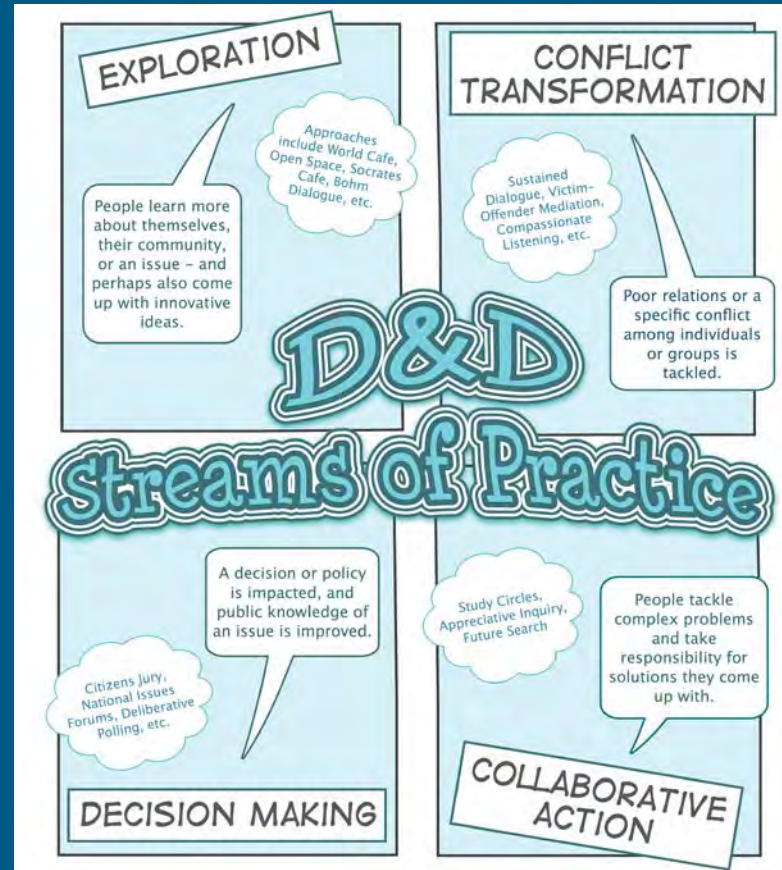


CHARACTERISTICS OF DEBATE, DIALOGUE & DELIBERATION

Debate	Dialogue	Deliberation
Compete	Exchange	Weigh
Argue	Discuss	Choose
Promote opinion	Build relationships	Make choices
Seek majority	Understand	Seek overlap
Persuade	Seek understanding	Seek common ground
Dig in	Reach across	Framed to make choices
Tight structure	Loose structure	Flexible structure
Express	Listen	Learn
Usually fast	Usually slow	Usually slow
Clarifies	Clarifies	Clarifies
Win/lose	No decision	Common ground

Excerpt from: The Public's Voice: Building Community Engagement Through Deliberative Dialogues, Sandra Hodge, Ph.D. and Patty Dineen

D&D ENGAGEMENT STREAMS



ENGAGEMENT STREAMS

EXPLORATION

- Encourage people to learn more about themselves, others, issues

CONFLICT TRANSFORMATION

- Resolve conflicts, foster healing & growth, and improve relationships

DECISION-MAKING

- Influence public decisions and public policy, improve public knowledge

COLLABORATIVE ACTION

- Empower people and groups to solve complicated problems and take responsibility for solutions

CONVERSATION CAFÉ



ala.org/LTC-models

[#librariestransform](https://twitter.com/librariestransform)



WORLD CAFÉ



ala.org/LTC-models

[#librariestransform](https://twitter.com/librariestransform)



ESSENTIAL PARTNERS



ala.org/LTC-models

[#librariestransform](https://twitter.com/librariestransform)



NATIONAL ISSUES FORUMS



ala.org/LTC-models

[#librariestransform](https://twitter.com/librariestransform)



EVERYDAY DEMOCRACY



ala.org/LTC-models

[#librariestransform](https://twitter.com/librariestransform)



FUTURE SEARCH



ala.org/LTC-models

[#librariestransform](https://twitter.com/librariestransform)



ASK YOURSELF

- ▶ **What can you do next to start the ball rolling on engaging your community?**
- ▶ **What entities or organizations should you talk to?**
- ▶ **How can you learn from your community what most needs to be discussed?**

WEBINARS AND IN-PERSON TRAINING

PUBLIC LIBRARIES SERVING LARGE AND/OR URBAN COMMUNITIES

SERIES 1 – Spring 2017

For libraries serving large and/or urban communities (World Café, Everyday Democracy)

- **Webinar 1:** “Libraries Transforming Communities: Introduction to Dialogue & Deliberation”
Thursday, March 9, 2017, 1-2:30 p.m. CST
- **Webinar 2:** “Libraries Transforming Communities: **World Café**”
Thursday, April 6, 2017, 1-2:30 p.m. CST
- **Webinar 3:** “Libraries Transforming Communities: **Everyday Democracy’s** Dialogue to Change Process”
Monday, May 1, 2017, 1-2:30 p.m. CST
- **In-Person Workshop:** “LTC Models for Change: Dialogue & Deliberation for Large and Urban Communities”*
A preconference at the 2017 ALA Annual Conference: Friday, June 23, 2017, Chicago

WEBINARS AND IN-PERSON TRAINING ACADEMIC LIBRARIES

SERIES 2 – Fall 2017

For academic libraries (National Issues Forum, Essential Partners)

- **Webinar 1:** “Libraries Transforming Communities: Introduction to Dialogue & Deliberation”
September 13, 2017
- **Webinar 2:** “Libraries Transforming Communities: National Issues Forum”
October 11, 2017
- **Webinar 3:** “Libraries Transforming Communities: Essential Partners”
November 15, 2017
- **In-Person Workshop:** “LTC Models for Change: Dialogue & Deliberation for Academic Libraries”
February 9, 2018 (a preconference to the 2018 ALA Midwinter Meeting in Denver, CO)*

WEBINARS AND IN-PERSON TRAINING MID-SIZED, SMALL AND/OR RURAL COMMUNITIES

SERIES 3 – Winter/Spring 2018

For libraries serving mid-sized, small and/or rural communities (Future Search, Conversation Café)

- **Webinar 1:** “Libraries Transforming Communities: Introduction to Dialogue & Deliberation”
February 28, 2018
- **Webinar 2:** “Libraries Transforming Communities: **Conversation Café**”
March 28, 2018
- **Webinar 3:** : “Libraries Transforming Communities: **Essential Partners**”
April 25, 2018
- **In-Person Workshop:** “LTC Models for Change: Dialogue & Deliberation for Academic Libraries”
June 22, 2018 (a preconference to the 2018 ALA Annual Conference, New Orleans)

FAQs

Q. Do I have to have experience or prior knowledge of community engagement to participate in any of these learning sessions?

A. No. However, to participate in the in-person training you must have completed the three webinars and any related readings that lead up to it.

FAQs

Q. Will you be offering CEUs for these trainings?

A. Badging
Certificates of attendance

BADGING

ALA

Live Credit

American Library Association

Credentialed member since September 2015

Follow

About Us
The American Library Association (ALA) is the oldest and largest library association in the world. The mission of ALA is "to provide leadership for the development, promotion and improvement of library and information services and the profession of librarianship in order to enhance learning and ensure access to information for all."

Earned (1) **Given (256)**

PUBLIC CLAIM NOW

Fundamentals of Pres... Jumel Zhang	Fundamentals of Pres... Julie Wright	Fundamentals of Cata... Kelly Merritt	Fundamentals of Cata... Jumel Zhang
Fundamentals of Cata... b.v	Fundamentals of Cata... Karina Santana	Fundamentals of Acq... Elizabeth South	Fundamentals of Colle... Adele Thibe

ala.org/LTC-models

[#librariestransform](https://twitter.com/librariestransform)



FAQs

Q. Is there a cost?

A. No. It's **FREE.**

TRAVEL STIPEND

▶ 25 public libraries serving small, rural communities will be awarded a travel grant of \$800 to travel to the in-person training workshop in June 2018 in New Orleans.

▶ Grant application opens in June 2017

FAQs

Q. Will all the webinars be recorded?

A. Yes.

AVAILABLE RESOURCES

LTC Websites:

ala.org/LTC

ala.org/LTC-models

Community Engagement Listserv:

communityengagement@lists.ala.org

NCDD Resource Center:

ncdd.org/rc/

REGISTER NOW

Registration is open for:

SERIES 1:

Libraries serving large and/or urban communities

Register now at:
ala.org/LTC-models

Libraries Transforming Communities: Models for Change



BECAUSE OUR
DIVIDED NATION
NEEDS CONVERSATION
MORE THAN EVER.

A free learning series from
ALA and the National Coalition
for Dialogue & Deliberation
Online sessions start Feb. 9.

Libraries Transforming Communities (LTC): Models for Change is an initiative of the American Library Association (ALA) and National Coalition for Dialogue & Deliberation (NCDD).

It seeks to introduce libraries to various dialogue and deliberation approaches, enabling libraries to foster conversation and lead change in their communities.

[Upcoming Trainings](#)

[Partner Organizations](#)

LTC: Models for Change is the second phase of ALA's Libraries Transforming Communities initiative. [Learn more about the first phase of the project](#), offered in 2014-15 in partnership with The Harwood Institute for Public Innovation.

Upcoming Trainings

Following is a list of virtual trainings (webinars) and in-person workshops offered through LTC: Models for Change. Please note:

- Three tracks, or series, of trainings are available:
 - [Series 1](#): For public libraries serving large and/or urban communities (spring 2017)
 - [Series 2](#): For academic libraries (fall 2017)
 - [Series 3](#): For public libraries serving small, mid-sized and/or rural communities (winter/spring 2018)
- Each track consists of five parts: the introductory webinar, three library-specific webinars, and one in-person workshop.
- Take as many courses as you like; all webinars will be recorded and may be viewed on-demand, for free, at any time. This webpage will be updated with links to the recorded sessions when available.

Introductory Webinar

"Libraries Transforming Communities: Models for Change Overview"

Thursday, Feb. 9, 2017, 1 - 2:30 p.m. CST

Type: Virtual

Library Types: All

[Register Now](#)

Series 1: For libraries serving large and/or urban communities (World Cafe, Everyday Democracy) — Spring 2017

MORE QUESTIONS?

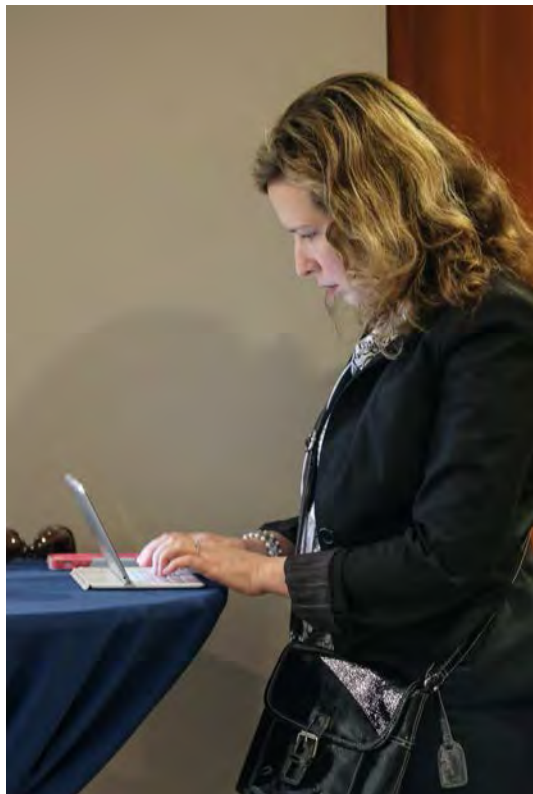
ala.org/LTC-models

[#librariestransform](https://twitter.com/librariestransform)



REGISTER NOW

ala.org/LTC-models



ala.org/LTC-models

#librariestransform





LIBRARIES
TRANSFORMING
COMMUNITIES
MODELS FOR CHANGE

THANK YOU!

BECAUSE OUR DIVIDED NATION NEEDS
CONVERSATION MORE THAN EVER.

