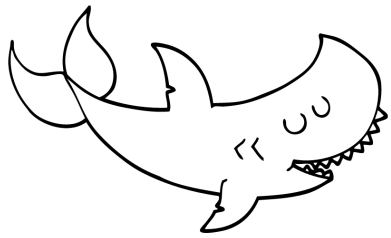
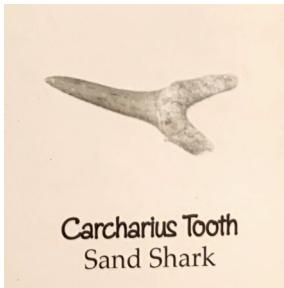


# Fossil Sorting Guide



## Shark Tooth Guide

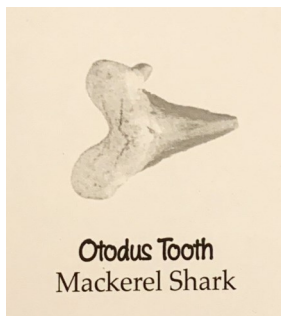


### Sand Shark

Age: Miocene (approx. 18-15 million years old)

The Sand Shark grew up to 10 feet in length.

The teeth have long crowns with small cusps (bumps) on long roots.



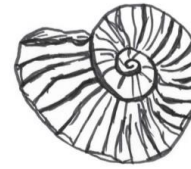
### Mackerel Shark

Age: Cretaceous (approx. 60-80 million years old)

The Mackerel Shark was a large predator. Scientists estimate it measured 30 feet in total length.

The teeth are large and triangular in shape with smooth cutting edges and visible cusps on the roots.

These are examples of fossils that may be included in your assortment.



### Ammonite

Age: Jurassic  
(approx. 146-200 million years old)

Class: Cephalopoda

Modern Relatives: squid, octopus, cuttlefish



### Brachiopod

Age: Cretaceous  
(approx. 65-146 million years old)

Phylum: Brachiopoda

Modern Relatives: some Brachiopods still exist today

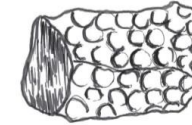


### Crinoid Stem

Age: Devonian  
(approx. 359-416 million years old)

Class: Crinoidea

Modern Relatives: starfish, sea urchins, sand dollars



### Branch Coral

Age: Devonian  
(approx. 359-416 million years old)

Class: Anthozoa

Modern Relatives: many types of coral still exist today



### Orthoceras

Age: Ordovician  
(approx. 443-485 million years old)

Class: Cephalopoda

Modern Relatives: squid, octopus, cuttlefish

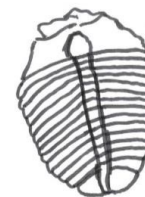


### Fossil Clam

Age: Cretaceous  
(approx. 65-146 million years old)

Class: Bivalvia

Modern Relatives: many types of clams still exist today



### Trilobite

Age: Devonian  
(approx. 359-416 million years old)

Class: Trilobita

Modern Relatives: horseshoe crabs, spiders



### Fossil Snail

Age: Cretaceous  
(approx. 65-146 million years old)

Class: Gastropoda

Modern Relatives: slugs, snails



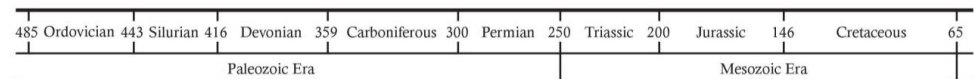
### Fossil Snail

Age: Cretaceous  
(approx. 65-146 million years old)

Class: Gastropoda

Modern Relatives: slugs, snails

### Timeline by Millions of Years Ago:



# Fossil Identification

What fossils did you discover? Draw your fossil in the table below. Can you identify what type of fossil you found? Some fossils can be difficult to identify. Feel free to ask a grownup for help.